

**HYDR8**

# 5-Gallon Cooler Cleaning Checklist

**Cooler #:**

**Notes:**

**Location:**

**Date:**



**1.**

**7.**

**2.**

**8.**

**3.**

**9.**

**4.**

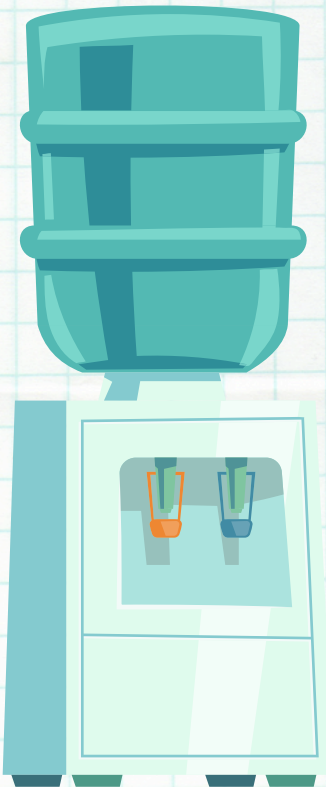
**10.**

**5.**

**11.**

**6.**

**12.**





## THE STEPS

1. Unplug the cord.
2. Remove the bottle from the cooler. If there is still water in the bottle make sure that you cap or cover the bottle for reuse.
3. From the cold faucet drain all water from the cooler into a bucket and discard the water.
4. Remove the cooler top. If the cooler is equipped with a no-spill device, it may need to be removed first. Look in the reservoir to see if there is a removable baffle. If so, remove the baffle.
5. If there is remaining water in the cold water chamber, drain it out. If the reservoir has an ice ring in it, add hot water to melt the ring and completely drain the reservoir. DO NOT spill water outside of the reservoir into the interior of the cooler.
6. Prepare the cleaning solution in the calibrated container; add 1 teaspoon of unscented household liquid bleach to each 1 gallon of water.
7. Wearing clean rubber gloves immerse the lint-free towel and/or scrub brush in the cleaning solution. Squeeze all excess cleaning solution from the towel and aggressively clean all surfaces of the reservoir interior. DO NOT pour the cleaning solution directly into the reservoir.
8. To rinse the reservoir, carefully fill the reservoir with bottled water from the one-gallon container until it reaches  $\frac{1}{2}$  inch from the top of the reservoir. Next, drain the "rinse" water from the reservoir through the COLD faucet.
9. Use the same cleaning solution brush and/or cloth to clean the baffle, the cooler top, removable drip tray and faucets. If your cooler is equipped with a no-spill device, it should be cleaned with the same cleaning solution. Use the clean 1 gallon container filled with bottled water to thoroughly rinse these parts.
10. Wearing clean rubber gloves, re-install all parts: baffle, cooler top, faucets if removed and no-spill device (if equipped).
11. Place a bottle back on the cooler and drain two cups of water from each faucet, or until there is no evidence of chlorine taste and/or odor. Dry any excess water that has spilled on the cooler and/or floor.
12. Plug the cooler back into the electrical outlet. Allow at least 45 minutes for the water to reach the appropriate temperature.

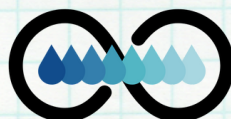


**\*Skip ALL 12-Steps by going  
BOTTLELESS with Hydr8  
water purification machines!**

- **Unlimited Water**
- **No More Deliveries**
- **More Sustainable**
- **Zero Maintenance**
- **Flat Monthly Fee**

*Claim Your  
8-Day FREE Trial  
Call Us Today*

**718-313-0113**



[www.Hydr8.us](http://www.Hydr8.us)